

DSAC's CADAM License Manager V5R20

CATIA-CADAM Drafting (CCD) V5 supports two licensing methods. The licenses can either be managed by IBM's License Use Management (LUM) or Dassault Systemes Americas (DSAC's) CADAM License Manager (CLM). Some CCD product licenses can only be managed by CLM. This document will only address the CLM method. For detailed information on LUM licensing, please refer to the white paper "Installing Licensing for CCD" on our Web site at:

http://www.cadam.com/ccd_support_white.htm

CLM can coexist with LUM and CCD can request licenses from either one. CLM keys have a different format than the ones used by LUM.

All CCD V5 products are supported by DSAC's licensing method:

- Base CCD
- CADEX
- HRAS
- Two features require CLM and cannot use LUM:
 - CADEX Extended features – Requires a CDXAUTOkey
 - Drawing Merge feature – Requires a DWGMERGEkey

CCD V520 SP1 or higher is recommended, which can be downloaded from our Web site www.cadam.com

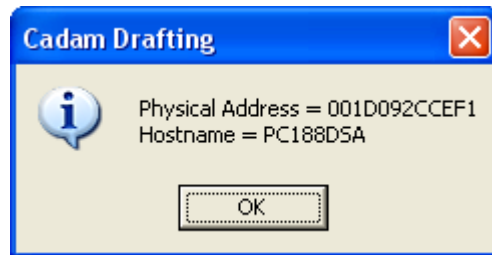
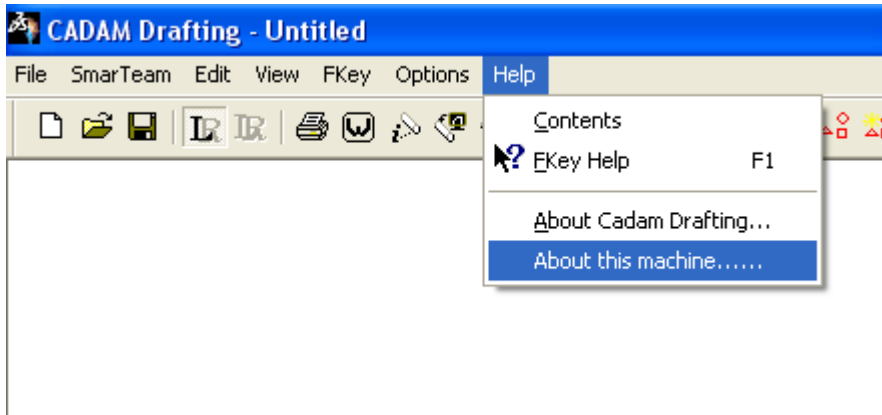
Ordering product licenses:

Download and install CCD from http://www.cadam.com/ccd_downloads_v5.htm

After installing CCD, start it. CCD will first look in the Ccdraft\License folder for a DSA license type. It will look for a nodelock key first, but if one is not found, it will look for a DSALI_T1.data file to find a concurrent license. If neither is found, then it looks for a LUM license. If CCD fails to find a valid license (CLM or LUM) then CCD will display the following message:



Make note of the Physical Address displayed. You can also select Help > “About this machine” to display the machine’s Physical Address:



To order a CCD V5 product license, you must contact DSAC and provide the physical address displayed by either method described above. Please call 1-866-48-CADAM or submit the license request through our Support Page at:

http://www.cadam.com/ccd_support.htm

Trial licenses can also be requested. These are 30-day full-function licenses for evaluation purposes. They can either be nodelock or concurrent, as described hereafter.

This document covers the three CLM supported licensing methods:

- **Nodelock** – Used to license individual machines.
- **Concurrent** – Used when sharing license over a network is desired. This method is also known as a floating or network license.
- **Off-line** – Concurrent licenses can be checked-out and back in to a license server.

Nodelock Licensing

This is the simplest licensing method. The CADAM License Manager does not need to be installed. The nodelock key is an unreadable file, delivered to the requester via e-mail. The naming convention of the file name is:

“<productname>key_<physicaladdress>”

Copy the nodelock key file to the Ccdraft\License folder.

Important: *Check that no file extension is added to this file. Some e-mail systems may add a .dat file extension and this will cause CCD not to find the file. The user that will be running CCD must have read/write access to this file*

CCD will now run and be fully functional.

Concurrent Licensing

Use this method if floating licenses over a network are desired. The CADAM License Manager (CLM) is required. CLM can coexist with LUM on the same machine or network. CCD does not need to be installed on the license server. The following is a step-by-step procedure to install and configure CLM.

1. Install CLM

The CADAM License Manager can be downloaded at no charge from our Web site www.cadam.com/ccd_downloads_v5.htm

CLM is supported on Windows 2000, XP 32bit or 64bit, Windows Server 2003 or 2008 and Windows 7.

The install is automated. By default, it copies all the required files to the folder C:\CADAM_License_Manager, but a different target folder can be specified. A Windows service named “CADAM License Manager,” is created during the install. At the end of the install, a pop-up message will display the machine’s physical address. If you do not already have your license key, please make note of it, as you will need it to order the product license keys from DSAC.

The following utilities are copied to the target folder during the install:

- **Floattool.exe** – Used to configure and monitor CLM.
- **DSALISvcMgr.exe** – Used to start and stop the CLM service.
- **DSALicenseUtil.exe** – Used to check-in and check-out licenses.

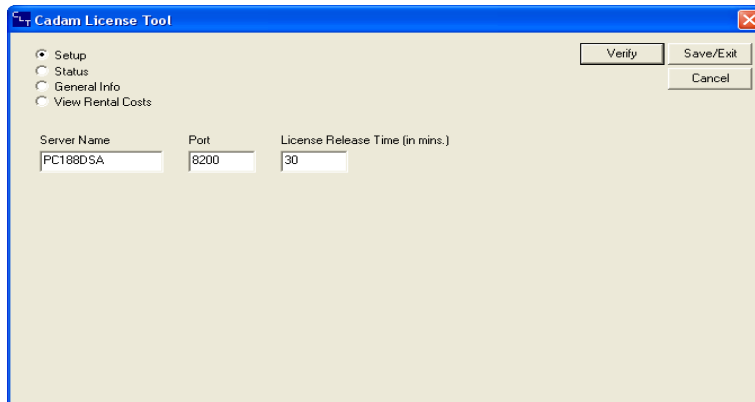
2. Configure CLM

- a. First, order the license keys from DSA. The keys are e-mailed to you in three files, using the following naming convention:

svrkey_<physicaladdress>
floatDB_T2_<physicaladdress>
floatDB_T2_PH

Copy the 3 files to the C:\CADAM_License_Manager folder, or to the target folder selected during the install.

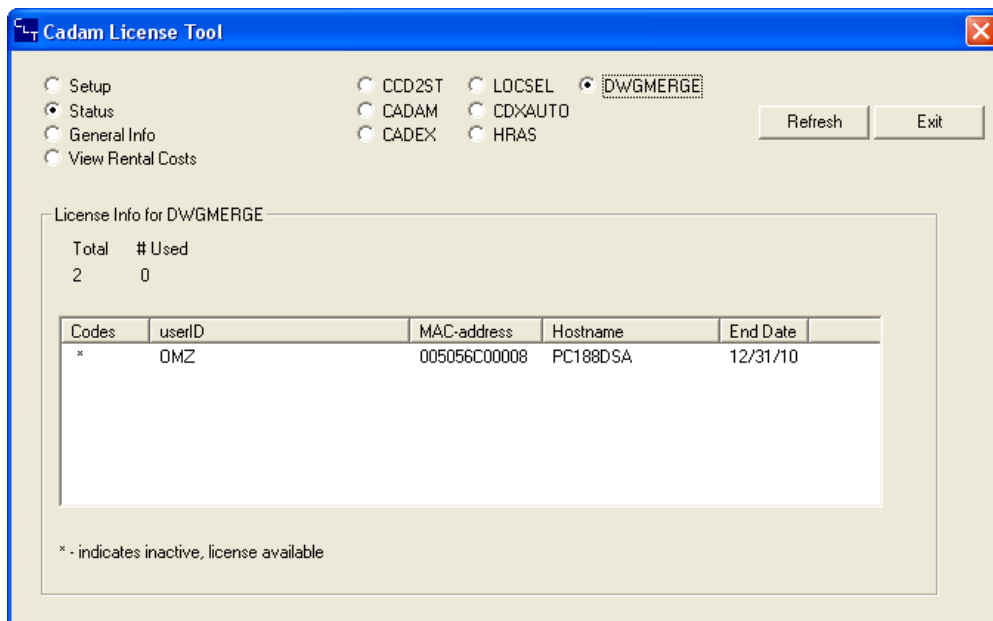
- b. Run **floattool.exe** and select **Setup**. Enter the **Server Name**. This is the machine’s hostname. For **Port** enter 8200. If this port number is already in use in the C:\WINDOWS\system32\drivers\etc\services file, then select any other port number that has not been defined.



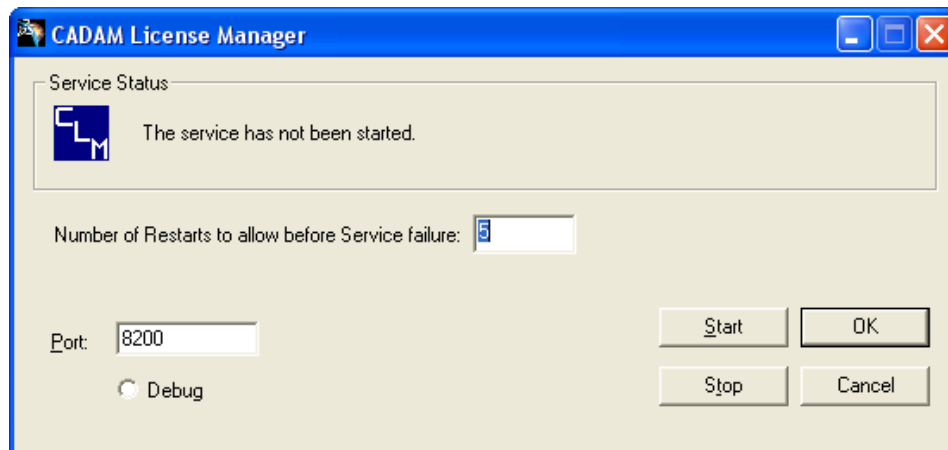
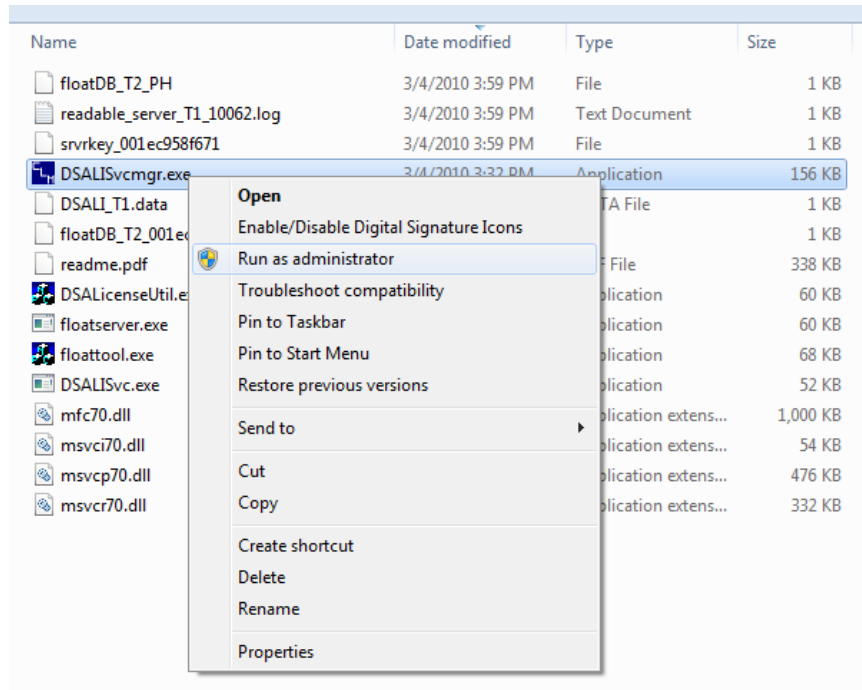
Change the **License Release Time**, if the default of 30 minutes (minimum) for a CCD session's idle time is not acceptable.

Click on **Save/Exit**. The file **DSALI_T1.data** will be created, containing all the license server information, which will be used by the CCD sessions.

If a CCD session's idle time exceeds the **License Release Time**, the license for that session will be tagged with an asterisk on the floattool.exe **Status** panel, making it available to any other client. If activity resumes on the original CCD session, and the license is still available, the asterisk is removed.

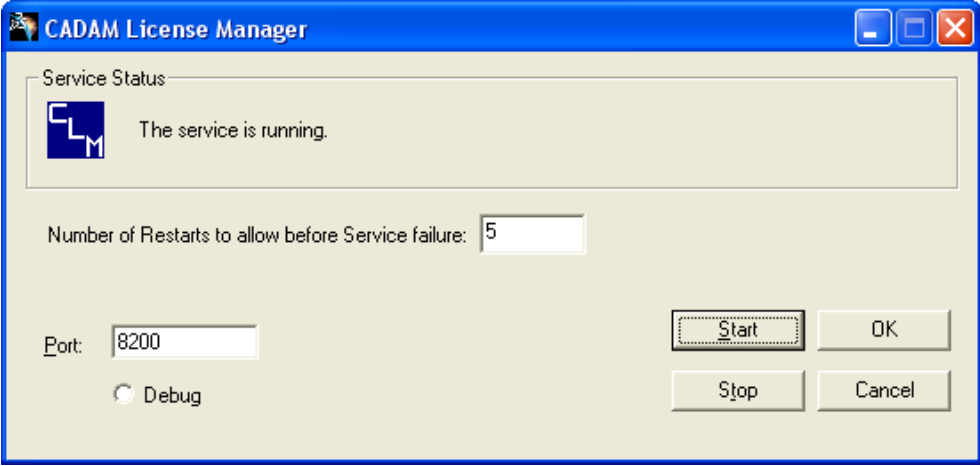


- c. Run the **DSALISvcMgr.exe** utility to start the CADAM License Manager service. On Windows 7, being logged on with an ID that is a member of the Administrators group, may not be enough to run this utility. So, right-click on the DSALISvcMgr.exe and select “Run as administrator:”



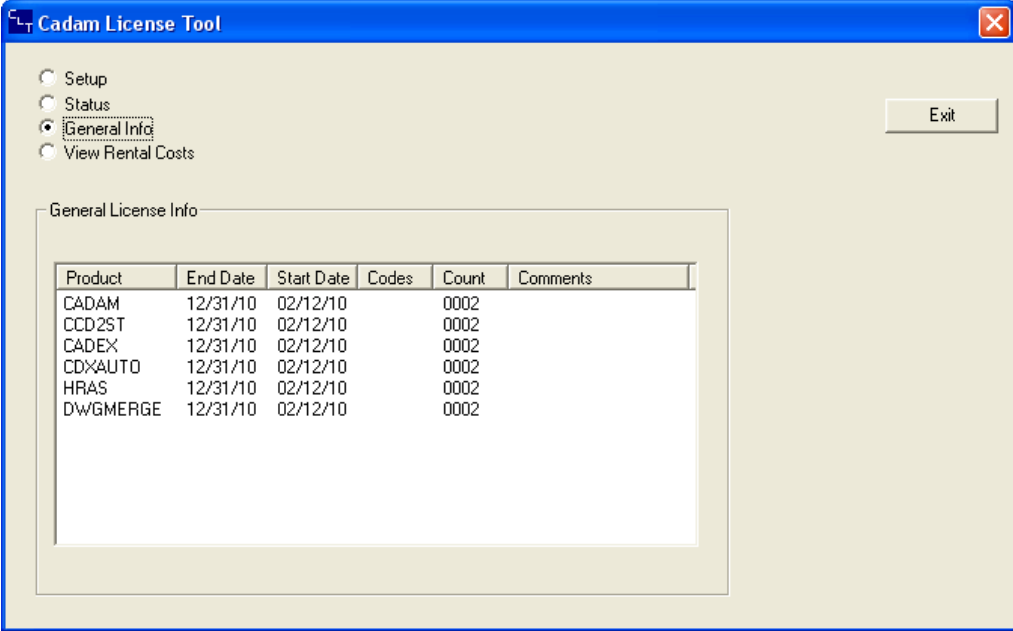
Click on **Start**. If the license key files are present and match the machine’s physical address, and the server setup (step b.) was

successful, then the service will start and continue to run. The service will start automatically on system reboots.



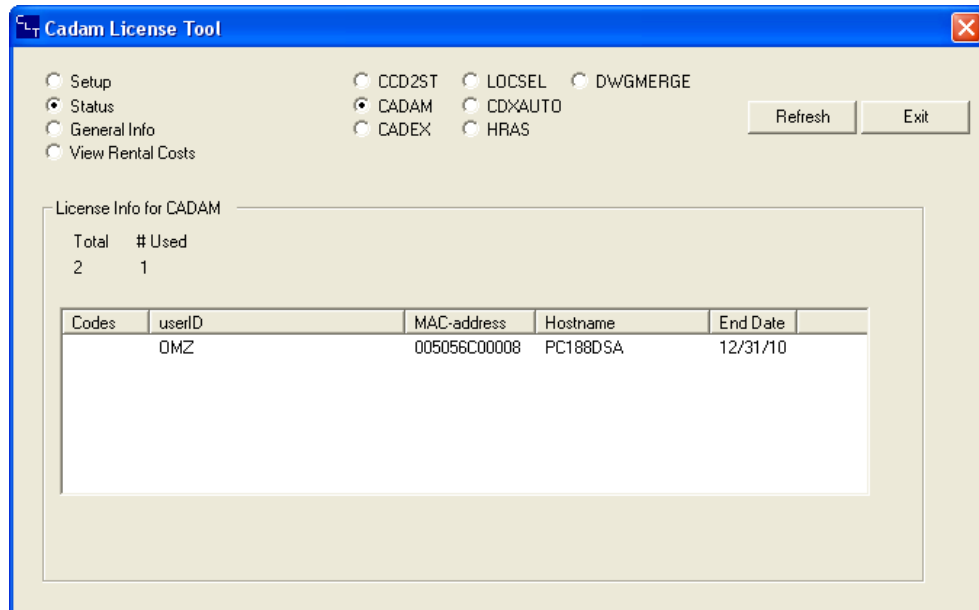
Important: When license keys are updated, the service needs to be stopped and restarted in order for it to use the new keys.

- d. Run **floatool.exe** and check that it displays the correct number of licenses for the product(s) you have ordered. Select **General Info**.



This completes the license server configuration, but we are not done.

Now, you need to copy the **DSALI_T1.data** file to all the PCs running CCD. Copy this file to the Ccdraft\License folder on each PC. This file contains the license server information CCD needs to find the server and request a license. If the server has an available license and grants it to CCD, the **floattool.exe** utility will show the Windows logon ID and computer it was granted to.



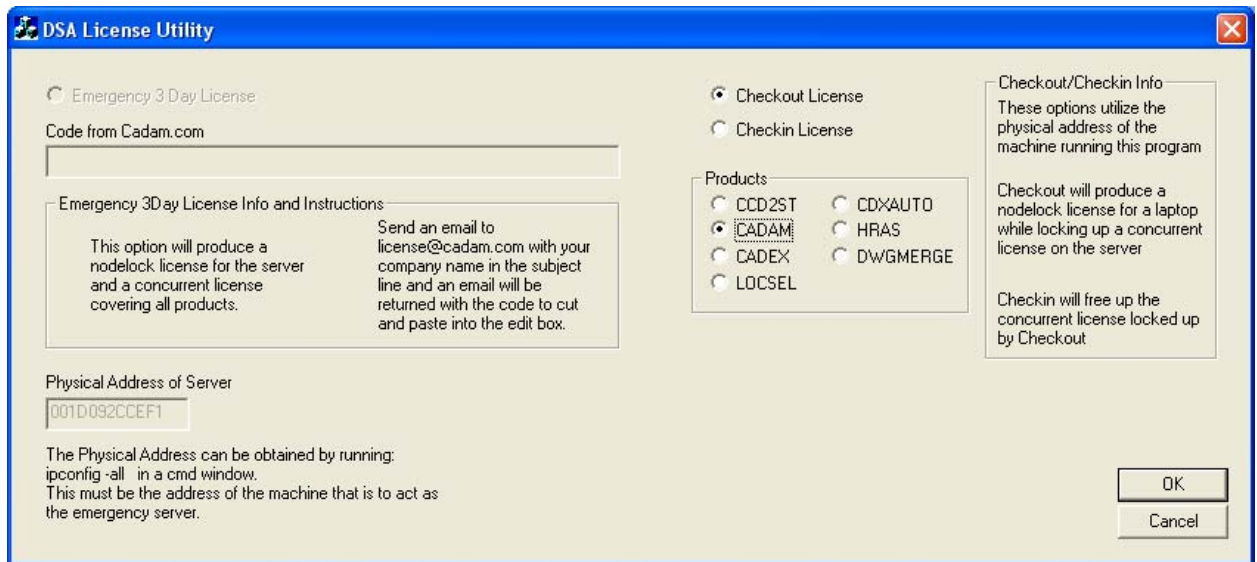
Off-Line Licenses

This utility, **DSALicenseUtil.exe**, is included with the CADAM License Manager. It was designed to give laptop computer users the capability to check-out CCD licenses from a CADAM License Manager. It creates nodelock keys that are good for 30 days from the day they are created.

Copy the **DSALicenseUtil.exe** to the Ccdraft\License folder of the laptop computer that will be checking out the license(s). Also in this folder, you must have a copy of the **DSALI_T1.data** file, which is required to communicate with the license server on your network.

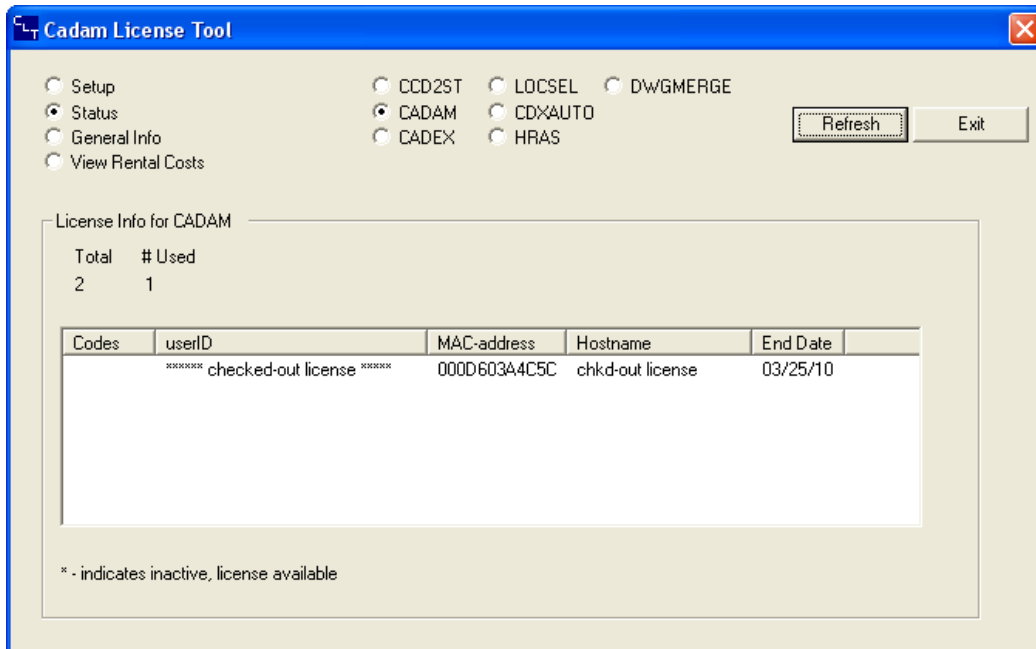
Checkout Licenses

Run **DSALicenseUtil.exe** and select **Checkout License**. Then check **CADAM** and click OK. Do the same for any other CCD product you need a license for. Of course, the requested license must be available or an error message will be displayed.



The appropriate license is created in the Ccdraft\License folder. The laptop can now be disconnected from the network. CCD will run displaying a message with the number of days left before the license will expire.

If you run **floattool.exe** on the license server, it will display that a license was checked-out and what computer it was checked-out to. If the license is not checked back in by the end date, then it becomes available for others to use.



Checkin Licenses

Connect the laptop computer to the network. Run **DSALicenseUtil.exe** and select **Checkin License**. Then select the product license being returned. The laptop local product license is removed and released on the server for others to use.

