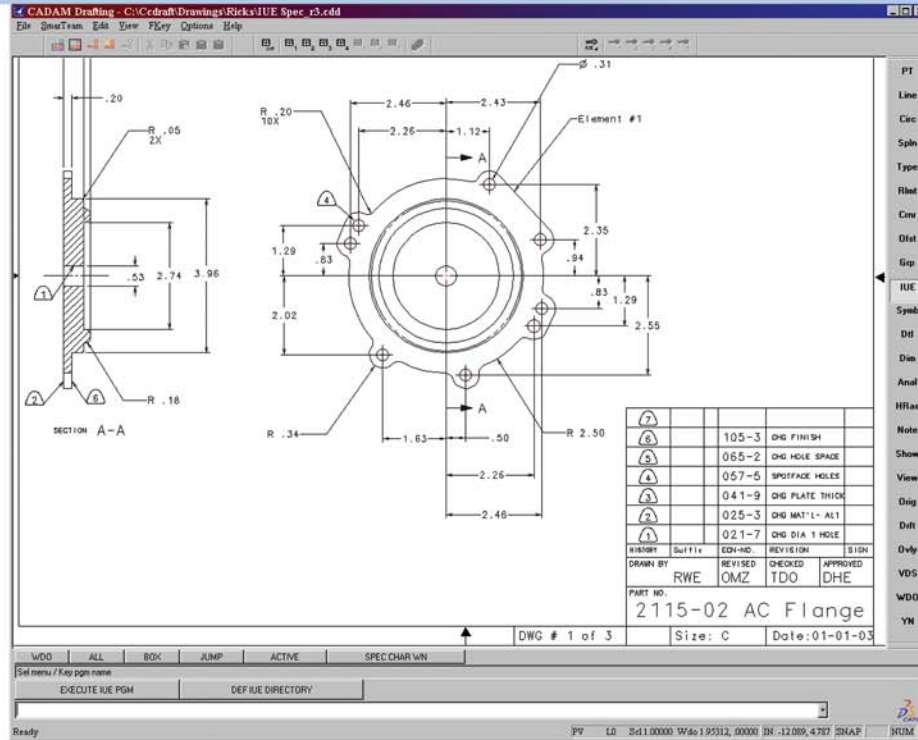


CCD Interactive User Exit (IUE)

IUE is a complete programmer's toolkit that allows the customization of the CATIA-CADAM Drafting system to precisely fit your needs. With IUE you can:

- Extract, create, and modify CATIA-CADAM Drafting (CCD) data directly
- Create customized interactive sessions to automate operations that are unique to your business.
- Utilize multiple off-the-shelf applications that have been created by third parties.
- Launch batch or interactive processing jobs from a CCD session.
- Work with multiple drawings at once.
- Replicate most CATIA-CADAM Drafting interactive functions in batch processes
- Access remote drawing databases, including Mainframe CADAM drawings, within workstation IUE programs.



Customize CATIA-CADAM Drafting

IUE is a complete toolkit of logically and intuitively designed utilities that can be used to perform tasks such as extracting data from, or writing data to, a CATIA-CADAM Drafting drawing. The utilities provide the building blocks to match nearly all of the functions available in interactive CCD.

IUE has been utilized by programmers to extract data for the creation of bills of material, to automate file management, or even to automate release management by identifying specific attributes, signatures, or other identifying elements within CCD drawings. Rule-based drawings, such as electrical ladder diagrams, can automatically be created by inputting parameters and executing an IUE program from within CCD.

Interactive IUE

IUE applications can be written such that they are fully interactive and even match the CCD interface. As an example, an IUE program could be written to calculate the thickness of a wall, or the length of a cable that connects two electrical components. Within a normal CCD session, prewritten IUE programs can be accessed through the IUE function Key or by convenient tool bar icons. The programs can be written to prompt users to select pertinent geometry, or key in a few parameters to generate the desired results. Difficult tasks that once required complex, time consuming calculations can be reduced to a few keystrokes



Ease of Programming

You do not need to be an expert programmer to use the IUE functions. If you have basic FORTRAN or C language programming skills, you can quickly become proficient in IUE. If you have previously written IUE programs for Mainframe CADAM, you will find CCD's IUE to be very compatible. IUE programming for PROFESSIONAL CADAM is exactly the same as for CCD, except for the improvements and additions made to CCD's IUE libraries. Both programmer's and user's documentation are provided.

Additionally, there are debugging tools for your programs, such as error codes and error diagnostic messages. These codes and messages are thoroughly documented as well.

Batch IUE

IUE programs that are executed in batch mode do not require an IUE license. That means that you can write enterprise-wide data management utilities that control the

way your CCD data is administered without requiring an IUE license to execute them. You can also write IUE programs that extract data from CCD drawings, compile that data, and generate reports, all without incurring additional licensing costs. Using standard operating system functions, these utilities can be scheduled to operate on your CCD database at low activity times of the day, thereby reducing the load on your servers. Data management has never been so easy or cost effective.

Accessible Data

Nearly all types of CCD data can be accessed through IUE programs. Of course, all geometric elements are accessible, but so are Hybrid Raster data, layer information, and Data Transfer utilities. IUE also provides support for some Variational Design System (VDS) functions.

The following are just some examples of data that can be extracted from, or added to, CCD drawings, along with a listing of additional functionalities:

- Geometric elements
- Pen settings
- Draft data
- Dimensions
- Line styles
- Areafills
- Detail names
- View colors
- Class sizes
- Set data
- Spline data
- Attribute data
- Layer information
- Overlay data
- Hybrid Raster data
- Family of VDS utilities
- Data Transfer facilities
- File operations

Technical Requirements

- IUE requires CATIA-CADAM Drafting and an IUE license if applications will be executed interactively from a CCD session
- A FORTRAN compiler is required to create new programs or to compile FORTRAN source code
- A C compiler is required to create new programs or to compile C source code
- Previously compiled IUE programs require only the appropriate runtime libraries
- UNIX and PC-based IUE programs are very compatible at the source level. Often, only recompilation is necessary on the destination system.



Phone: +1 818 999-2500

Fax: +1 818 999-3535

For more information about CATIA-CADAM Solutions, contact your IBM marketing representative or business partner. In the U.S., call toll-free at (800) 395-3339. You can also access a wealth of information about CATIA-CADAM Solutions on the Web:

www.catia.ibm.com

www.3DS.com

www.cadam.com

CATIA and CADAM are developed by Dassault Systèmes and marketed and supported worldwide by IBM and a network of business and development partners. CATIA is a registered trademark of Dassault Systèmes S.A., and CADAM is a registered trademark of Dassault Systèmes of America Corp. All other trademarks are the property of their respective owners. Photographic art is the exclusive property of Kirk Amyx Photography.

©Copyright 2003 Dassault Systèmes of America Corp.